

Sae Tachimori

日月 沙絵

vision track



画面を覆う鋭くも優しい緊張感で紡ぎだす、
美しく深く、圧倒的な世界観。

illustrator 日月 沙絵

Sae Tachimori

<Profile>

1984年大阪生まれ。京都市立芸術大学/漆工科 卒業。

<受賞暦>

- ・2006 玄光社「第148回 ザ・チョイス」入選
- ・2007 第5回 CWCチャンス展」入選

Commission Works

vision track

真夜中、月のしるべが導いては、
星のまば、いくつもの魂を誘ふ光り輝く。
だから、自身に託さないで、心を込めて、
貴族にその手をおぼすのです。

この一瞬でも、今だけでもおぼすなら、
白鳥のような世界も翼がひろがるから、
めぐる月と星に、心を通わせてみて。

Moonlight Virgin

さやめく輝き、
私のもの。

MAJOLICA MAJORCA
10th Anniversary



MAJOLICA MAJORCA

+ おしらせ

+ おはなし & 新アイテム



10周年記念

+ 全アイテム

+ 欲望を叶えるコツ



Share

Prev



真夜中、月のしらべが呼んでいる。
女の子は、いくつもの顔を操る生き物。
だから、自分に足りない美しさを追い求め、
食欲にその手をのばすのです。

たった一晩でも、今だけでもかまわない。
白鳥のような甘美な翼が得られたら。
めくるめく輝きに、吸い寄せられてゆく。

Makeup Data

もうひとりの私、
見せてあげる。

ON/OFF



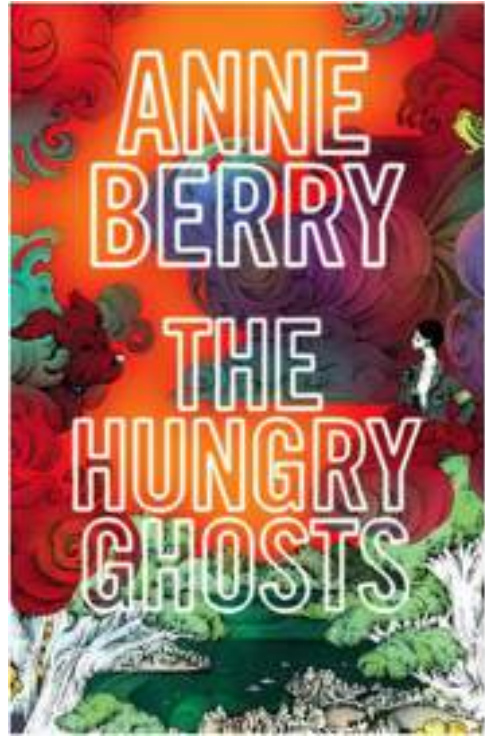


















made by Sae Tachimori

A right royal ride

Fed up with the credit crunch? Let us throw off the shackles of economic gloom for just a moment and take a look at the ridiculously opulent Japanese Imperial Wheels. By Toyota, of course

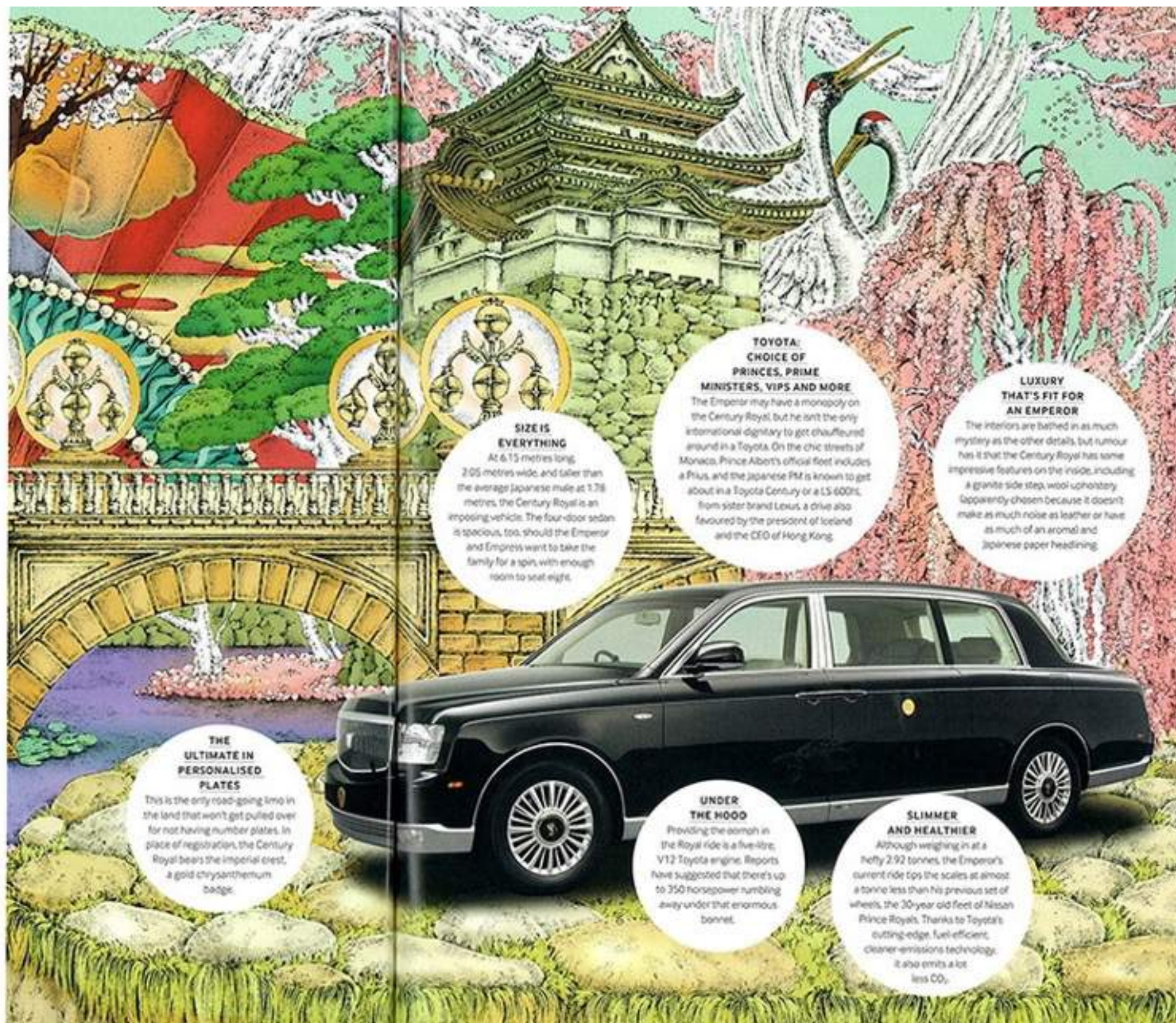
STORY ROB GOSS • ILLUSTRATION SAE TACHIMORI

ASK ANY JAPANESE Toyota aficionado about the Toyota Century and they'll happily start reeling off a list of the luxury limo's impressive features. There's the five-litre, V12 engine, the digital TV tuner as standard, and the built-in massage system in the back seats, to name but a few of the touches that have given the Century its reputation as a presidential suite on wheels. Try asking them about the Toyota Century Royal, though, and you'll likely get nothing more than 'Isn't that the Emperor's car?' It is. And it's shrouded in secrecy.

Beyond the most limited of specs (it's big and has four wheels), Toyota and the Imperial Household have revealed only the occasional snippet of information on the Century Royal since it was unveiled in July 2006. We know that only four have ever been made, each built exclusively for the Imperial Family under contract from Toyota by the legendary Kanto Auto Works. We know too that it boasts state-of-the-art security features, which reportedly include bullet-proofing and run-flat tyres, not to mention some distinctly Japanese interior touches.

'It is certainly an honour for us that the Century Royal was chosen by the Imperial Family,' says Toyota's Monika Saito. 'It is our hope that the vehicle displays what is special about Toyota technology and also provides the highest level of Japanese hospitality and comfort to distinguished guests of Japan.'

From the few tantalising Century Royal facts and photos kicking about, it seems to do just that. ■



SIZE IS EVERYTHING

At 6.15 metres long, 2.05 metres wide, and taller than the average Japanese male at 1.78 metres, the Century Royal is an imposing vehicle. The four-door sedan is spacious, too, should the Emperor and Empress want to take the family for a spin, with enough room to seat eight.

THE ULTIMATE IN PERSONALISED PLATES

This is the only road-going limo in the land that won't get pulled over for not having number plates. In place of registration, the Century Royal bears the imperial crest, a gold chrysanthemum badge.

TOYOTA: CHOICE OF PRINCES, PRIME MINISTERS, VIPs AND MORE

The Emperor may have a monopoly on the Century Royal, but he isn't the only international dignitary to get chauffeured around in a Toyota. On the chic streets of Monaco, Prince Albert's official fleet includes a Prius, and the Japanese PM is known to get about in a Toyota Century or a LS 600hL, from sister brand Lexus, a drive also favoured by the president of Iceland and the CEO of Hong Kong.

LUXURY THAT'S FIT FOR AN EMPEROR

The interiors are bathed in as much mystery as the other details, but rumour has it that the Century Royal has some impressive features on the inside, including a granite side step, wool upholstery (apparently chosen because it doesn't make as much noise as leather or have as much of an aroma) and Japanese paper headlining.

UNDER THE HOOD

Providing the brawn in the Royal ride is a five-litre, V12 Toyota engine. Reports have suggested that there's up to 350 horsepower rumbling away under that enormous bonnet.

SLIMMER AND HEALTHIER

Although weighing in at a hefty 2.92 tonnes, the Emperor's current ride tips the scales at almost a tonne less than his previous set of wheels, the 30-year old fleet of Nissan Prince Royals. Thanks to Toyota's cutting-edge, fuel-efficient, cleaner-emissions technology, it also emits a lot less CO₂.









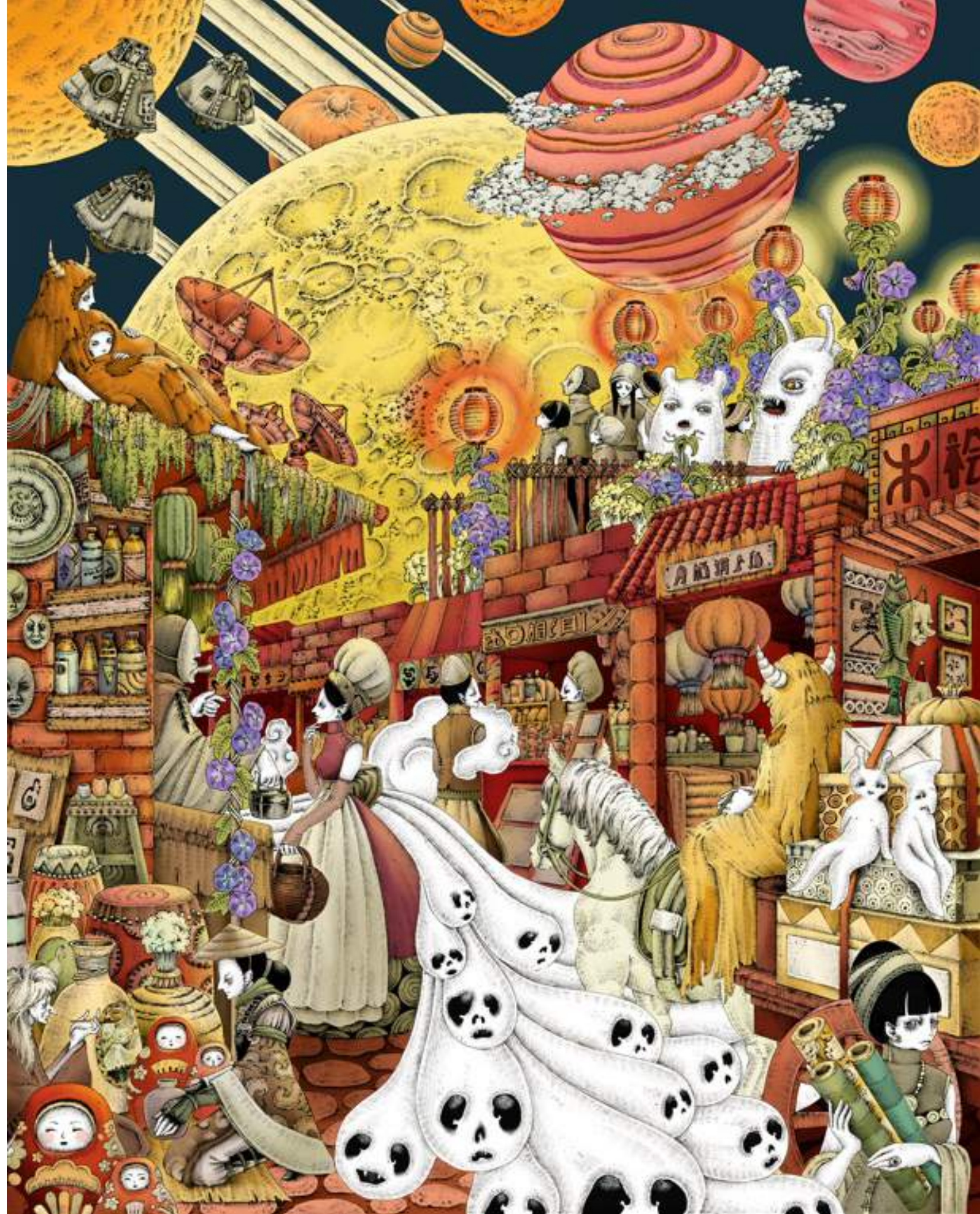
Personal Works

vision track













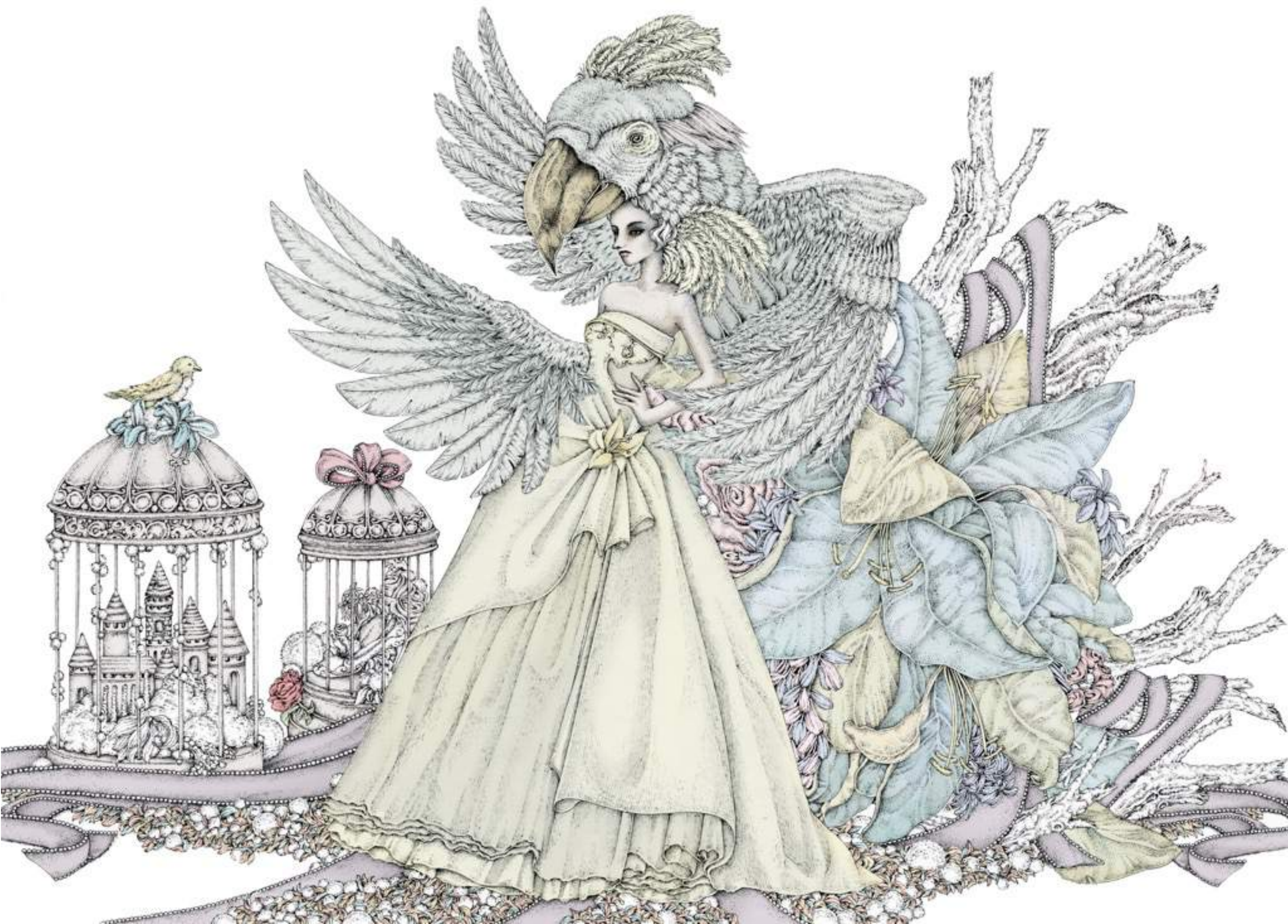


































担当：庄野裕晃 shono@visiontrack.jp

vision track

TOKYO

141-0031 東京都品川区西五反田3-8-3 町原ビル2F
T 03-3493-3456 F 03-3493-3445

OSAKA

530-0047 大阪市北区西天満 2-8-1 大江ビル210
T 06-6316-7363 F 06-6316-7365